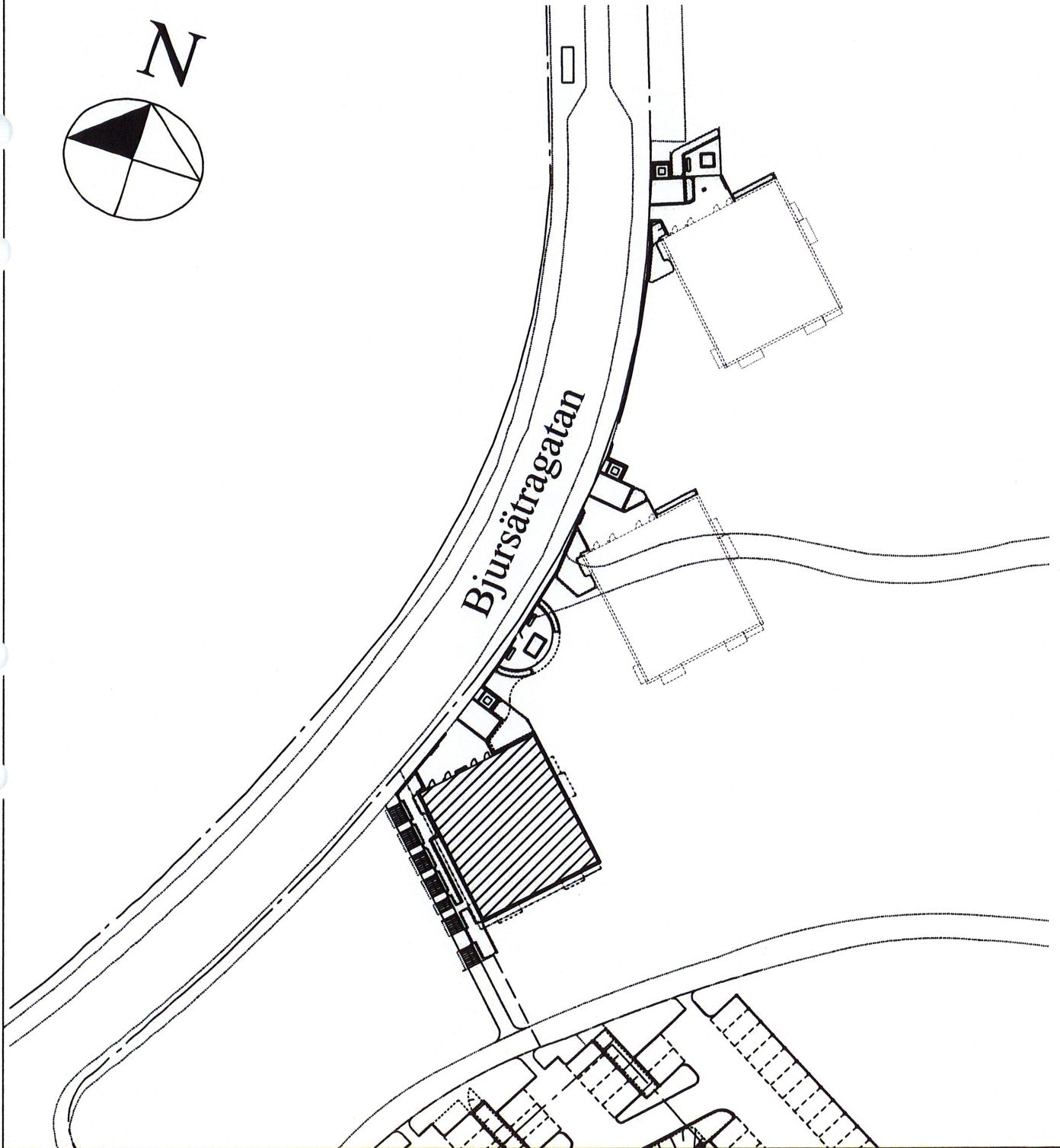
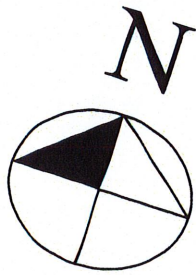


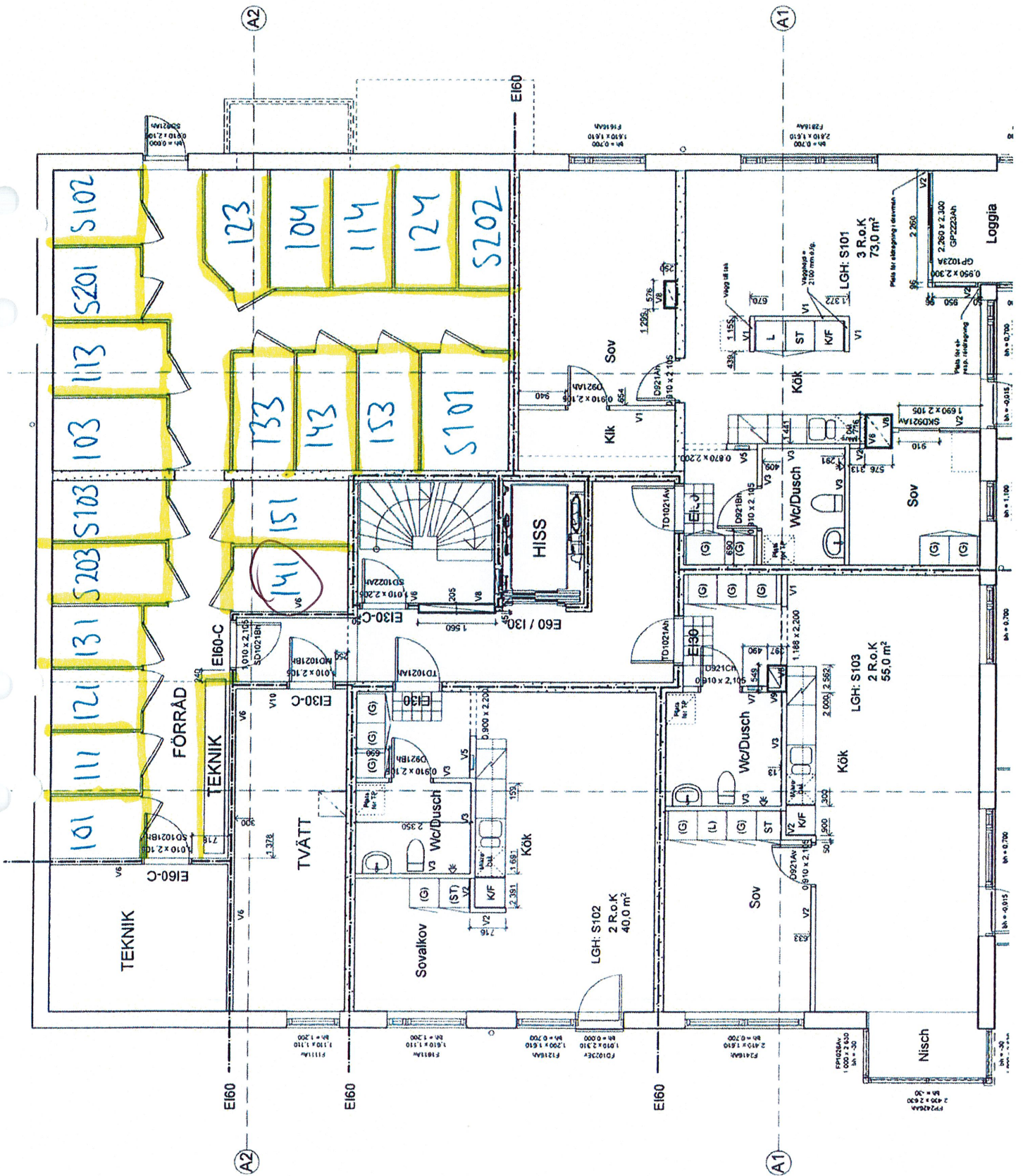
Orienteringskarta



Teckenförklaring
se rit. M16.1-01

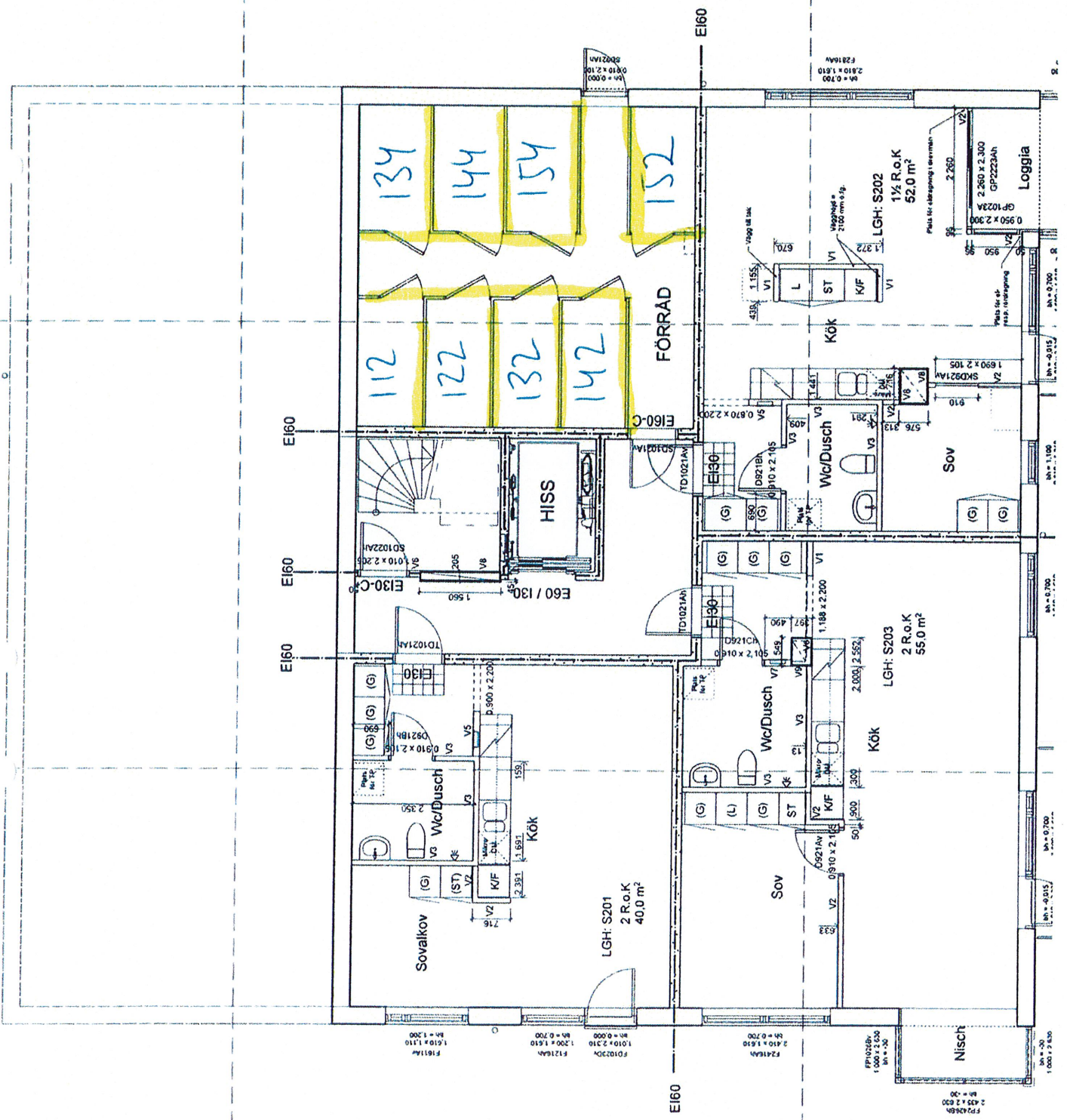
| | | | | | |
|--|------------|---------------|--------------|-------|-------|
| M1 | 1:1000 | Arkitekt | 1:500 | 1:200 | 1:100 |
| Prel. Fortfagningsunderlag 08-09-09 | | | | | |
| IKANO BOSTADSPROJEKTORER | | | | | |
| LL Mark Consult AB Svevägsgatan 10, 141 38, S-141 38 Tel: 08 77 50 00 Fax: 08 77 50 05 | | | | | |
| SPRÅK | SE | PROJEKTLEDARE | P. LUNDQVIST | | |
| DRIT | E. JARSSON | ARKITECT | P. LUNDQVIST | | |
| KV ÖSTKAMMAREN Stadsdelen Rågsved - Stockholms Kommun | | | | | |
| MARKPLANERINGSPLAN | | | | | |
| SKALA | A1:1:200 | ARKITECT | M16.1-02 | | |





A2

A1



A2

A1

E160

E160

E160

E160

E160

E160

LGH: S201
2 R.o.K
40,0 m²

Sovalkov

Wc/Dusch

Kök

SOV

Wc/Dusch

Kök

SOV

Wc/Dusch

Kök

SOV

Wc/Dusch

Kök

SOV

FÖRRÅD

HISS

SOV

Wc/Dusch

Kök

SOV

Wc/Dusch

Kök

SOV

Wc/Dusch

Kök

SOV

Wc/Dusch

Kök

SOV

Wc/Dusch

Kök

SOV

Wc/Dusch

Kök

SOV

Wc/Dusch

Kök

SOV

Wc/Dusch

Kök

SOV

Wc/Dusch

Kök

SOV

Wc/Dusch

LGH: S202
1½ R.o.K
52,0 m²

Loggia

SOV

Wc/Dusch

Kök

SOV

Wc/Dusch

Kök

SOV

Wc/Dusch

Kök

SOV

Wc/Dusch

Kök

SOV

Wc/Dusch

Kök

SOV

Wc/Dusch

Kök

SOV

Wc/Dusch

Kök

SOV

Wc/Dusch

Kök

SOV

Wc/Dusch

Kök

SOV

Wc/Dusch

Kök

SOV

Wc/Dusch

Kök

SOV

LGH: S203
2 R.o.K
55,0 m²

Nisch

SOV

Wc/Dusch

Kök

SOV

Wc/Dusch

Kök

SOV

Wc/Dusch

Kök

SOV

Wc/Dusch

Kök

SOV

Wc/Dusch

Kök

SOV

Wc/Dusch

Kök

SOV

Wc/Dusch

Kök

SOV

Wc/Dusch

Kök

SOV

Wc/Dusch

Kök

SOV

Wc/Dusch

Kök

SOV

Wc/Dusch

Kök

SOV

F2215A
2,810 x 1,610
BH = 0,700

F2215A
2,810 x 1,610
BH = 0,700

F2215A
2,810 x 1,610
BH = 0,700

F2215A
2,810 x 1,610
BH = 0,700

F2215A
2,810 x 1,610
BH = 0,700

F2215A
2,810 x 1,610
BH = 0,700

F2215A
2,810 x 1,610
BH = 0,700

F2215A
2,810 x 1,610
BH = 0,700

F2215A
2,810 x 1,610
BH = 0,700

F2215A
2,810 x 1,610
BH = 0,700

F2215A
2,810 x 1,610
BH = 0,700

F2215A
2,810 x 1,610
BH = 0,700

F2215A
2,810 x 1,610
BH = 0,700

F2215A
2,810 x 1,610
BH = 0,700

F2215A
2,810 x 1,610
BH = 0,700

F2215A
2,810 x 1,610
BH = 0,700

F2215A
2,810 x 1,610
BH = 0,700

F2215A
2,810 x 1,610
BH = 0,700

F2215A
2,810 x 1,610
BH = 0,700

F2215A
2,810 x 1,610
BH = 0,700

F2215A
2,810 x 1,610
BH = 0,700

F2215A
2,810 x 1,610
BH = 0,700

F2215A
2,810 x 1,610
BH = 0,700

F2215A
2,810 x 1,610
BH = 0,700

F2215A
2,810 x 1,610
BH = 0,700

F2215A
2,810 x 1,610
BH = 0,700

F2215A
2,810 x 1,610
BH = 0,700

F2215A
2,810 x 1,610
BH = 0,700

F2215A
2,810 x 1,610
BH = 0,700

F2215A
2,810 x 1,610
BH = 0,700

F2215A
2,810 x 1,610
BH = 0,700

F2215A
2,810 x 1,610
BH = 0,700

F2215A
2,810 x 1,610
BH = 0,700

F2215A
2,810 x 1,610
BH = 0,700

F2215A
2,810 x 1,610
BH = 0,700

F2215A
2,810 x 1,610
BH = 0,700

F2215A
2,810 x 1,610
BH = 0,700

F2215A
2,810 x 1,610
BH = 0,700

F2215A
2,810 x 1,610
BH = 0,700